

Villa Bellezza at Palencia



128 North River Drive at Palencia

Personal tours available upon request.

Included Features:

- Old World stucco with extensive cast stone architectural detailing
- Andersen wood frame windows
- Custom cherry wood library
- Brushed and chiseled stone floors
- Imported antique interior doors at selected locations
- Intimate wine cellar with marble floors and private dining area
- Intimate screened courtyard with exotic pool, spa, fireplace, summer kitchen and elegantly detailed metal doors at entrance

Priced at \$2.4 million



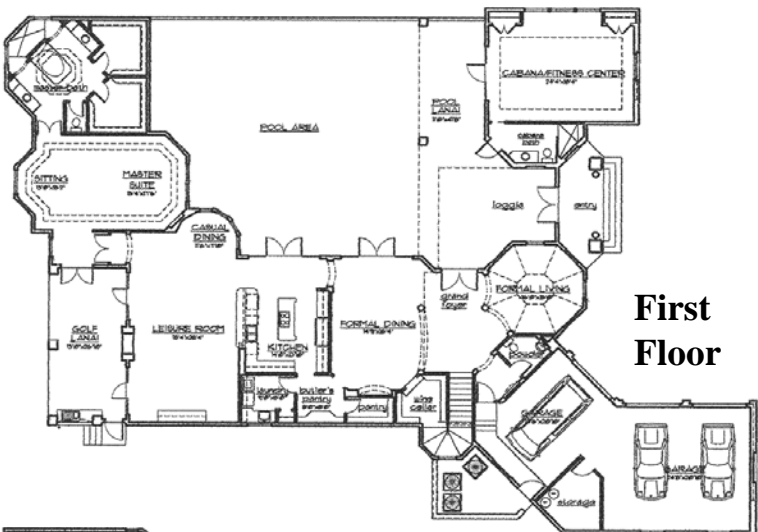
1579 The Greens Way #12
Jacksonville Beach, FL 32250

Phone: (904) 280-8777

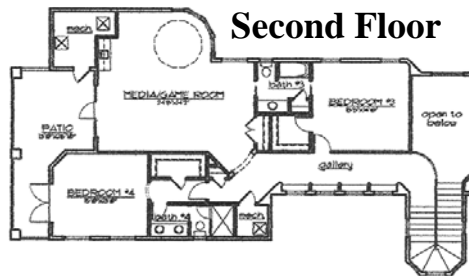
Fax: (904) 280-9060

Email: nancy@customluxuryhomes.com

Web: www.customluxuryhomes.com



First Floor



Second Floor

First Floor:	4,067 sq. ft.
Second Floor:	1,602 sq. ft.
Subtotal:	5,669 sq. ft.
Lanai:	635 sq. ft.
Entry:	133 sq. ft.
Patio/Deck:	253 sq. ft.
Garage:	1,011 sq. ft.
Total:	7,701 sq. ft.
Pool Area:	1,606 sq. ft.
Total Sq. Ft.	9,307 sq. ft.

The Benchmark Pledge

Each individual element of your home will be a showcase of creativity, craftsmanship and attention to detail and quality...

You have our promise!

PALENCIA

A Story of Discovery, Exploration, and Settlement